



Support Activities for Poor Producers of Nepal
(SAPPROS Nepal)

Organizational Profile

2025

Striving to make and maintain Nepal
green, healthy, wealthy, and happy!



Introduction

SAPPROS Nepal is a leading national non-profit organization dedicated to eradicating poverty and empowering rural communities in Nepal. Established in 1991 and registered with the District Administration Office in Kathmandu, SAPPROS Nepal is affiliated with the Social Welfare Council. Over the past three decades, we have expanded our reach to 55 districts, with a particular emphasis on remote and underserved regions.

Our work centers around five key areas:

1. Organizational Development and Capacity Building;
2. Infrastructure and WASH;
3. Food Security and Livelihood;
4. DRR/M, Resilience, and Climate Justice;
- and 5. Education, Health, and Nutrition.

By integrating institutions, infrastructure, resource generation, and local capacity development, SAPPROS Nepal aims to achieve sustainable development and enhance the resilience of women, the poor, marginalized, and vulnerable groups in development planning and decision-making with a focus on inclusivity and active participation. Through our wide range of developmental and livelihood projects, we have positively impacted the lives of over 600,000 households in Nepal.

Legal Status and Governance

Name of Organization	Support Activities for Poor Producers of Nepal (SAPPROS Nepal)
Year of establishment	1991 AD
Registration and Affiliation details	Registration at: District Administration Office, Kathmandu
	Registration date: 2048/05/27 (12 Sept 1991)
	Registration no.: 88/2048/2049
	Social Welfare Council (SWC), Kathmandu, Nepal Date: 2048/06/17 BS (3 Oct 1991)
PAN/VAT details	No.: 500199385
	Date: 2057/12/17 (30 Mar 2001)

Vision Mission and Values



Vision

A green Nepal, healthy lifestyle for improved livelihoods, resilience and wellbeing.



Mission

To empower communities and residents across Nepal to embrace sustainable practices, fostering healthy lifestyles, and enhancing livelihoods through education, advocacy, and innovative initiatives.



Core values

The core value of SAPPROS Nepal:

- » Promoting practices to preserve and protect the environment, ensuring the long-term health and viability of Nepal's natural resources.
- » Prioritizing the health and well-being of individuals and communities, striving to improve livelihoods and fostering resilience in the face of challenges.
- » Empowering individuals and communities to create positive changes
- » Seeking new, creative and effective solutions to improve lives and promote sustainability
- » Ensure marginalized groups, including women, people with disabilities, and indigenous communities, are at the forefront of development.



Goal

To promote sustainable development practices, foster healthy lifestyles, and enhance livelihoods across Nepal, thereby contributing to the creation of a greener, healthier, and more resilient society.

Organizational History and Milestones



Since
34 years



Reached out
55 districts



Benefitted
600,000+ households

Awards and Recognitions



Mr. Shrikrishna Upadhyaya, the founder chairperson and SAPPROS Nepal have been honored with the Right Livelihood Award 2010, also known as the “Alternative Nobel Prize”, for fighting against poverty in the country. This is in recognition for all of SAPPROS’ efforts, particularly those who are working in the field for the livelihoods of the poor.

Thematic Focus Areas



Organizational Development and Capacity Building

SAPPROS Nepal strengthens local institutions and grassroots organizations to drive sustainable development. Having established over 10,000 community-based organizations and cooperatives, it has enhanced governance, economic participation, and social inclusion for more than 250,000 households. These institutions serve as platforms for decision-making, resource mobilization, and advocacy, ensuring the voices of marginalized groups, women, youth, and persons with disabilities are heard.

SAPPROS empowers farmers and rural entrepreneurs by improving access to finance, business development, and digital and financial literacy training. By linking smallholder farmers and agripreneurs with financial institutions, it facilitates credit access, investment in technology, and business expansion. Additionally, vocational training in agro-processing, tailoring, handicrafts, carpentry, and electrical repair supports diversified and sustainable livelihoods. Through these initiatives, SAPPROS fosters self-reliance, economic inclusion, and resilience, positioning itself as a key partner for donors, INGOs, and global development agencies.





Infrastructure and WASH

SAPPROS Nepal enhances rural infrastructure and WASH services to improve livelihoods and resilience. Through 2,500 infrastructure projects, it has benefited more than 130,000 households and organizations by constructing and rehabilitating water supply systems, irrigation canals, and Solar Multiple-Use Water Systems (Solar MUS). Additionally, 30 solar-powered lift water projects address water scarcity in remote areas located above the water sources. SAPPROS has also built earthquake-resilient schools, health posts, and community centers, strengthening disaster preparedness and access to essential services.

To improve hygiene, SAPPROS promotes community-led sanitation campaigns, builds school and public toilets, and installs handwashing stations. Beyond WASH, it fosters economic integration by constructing farm-to-market roads, footbridges, and renewable energy solutions, supporting sustainable agriculture and economic growth. Its contribution to the Home-Grown School Feeding Program, through the construction of school kitchens and storage facilities, enhances food security. These efforts reduce water collection burdens, improve public health, and build climate resilience, making SAPPROS a trusted development partner for INGOs, donors, and government agencies.





Food Security and Livelihoods

SAPPROS Nepal strengthens food security and livelihoods by promoting climate-resilient agriculture, high-yield seeds, and modern farming techniques to empower its group members. Through farmer cooperatives, digital agro-platforms, and fair-trade promotion, SAPPROS ensures farmers receive equitable prices. Special emphasis is placed on empowering women farmers by providing training, market access, and leadership opportunities, fostering economic independence.

To enhance financial inclusion, SAPPROS facilitates Self-Help Groups (SHGs), improving access to savings and credit for marginalized farmers, women, and persons with disabilities. These groups provide vital financial alternatives in areas with limited banking services, supporting enterprise growth. The organization integrates climate-smart agriculture, irrigation support, and post-harvest management, ensuring long-term food security. Aligning with Nepal's Agriculture Development Strategy and the SDGs, SAPPROS fosters sustainable agricultural development and climate-resilient livelihoods.



DRR/M, Resilience and Climate Justice

SAPPROS Nepal integrates disaster risk reduction (DRR), resilience-building, and climate justice to mitigate climate-induced disasters. It equips vulnerable communities with digital tools, early warning systems, and climate-smart technologies, enabling informed decision-making to reduce environmental risks. Given Nepal's susceptibility to floods, landslides, and droughts, SAPPROS promotes watershed management, bioengineering techniques, and climate-resilient farming.

SAPPROS prioritizes inclusivity in DRR, ensuring that women, persons with disabilities, and indigenous groups actively participate in disaster preparedness, resource mobilization, and advocacy. It conducts Disability-Inclusive DRR and Vulnerability and Capacity Assessments, developing localized disaster response plans tailored to at-risk communities. In times of crisis, SAPPROS has provided NPR 330.6 million in cash transfers and distributed over 60,000 metric tons of food for immediate relief, supporting over 200,000 households. Partnering with local governments, INGOs, and humanitarian agencies, it aligns with global frameworks such as the Sendai Framework and the Paris Agreement, positioning itself as a leader in climate resilience and disaster management.





Education, Health and Nutrition

SAPPROS Nepal strengthens education, health, and nutrition, particularly for marginalized communities. It has constructed school kitchens and distributed utensils to enhance school meal programs, ensuring nutritious meals for students. Through homegrown school feeding programs, 49,500 students in 583 schools benefit, improving attendance, retention, and learning outcomes.

To combat malnutrition, SAPPROS has distributed over 4,600 metric tons of fortified super cereals to pregnant women, lactating mothers, and children under 23 months, improving maternal and child health. Community health systems are strengthened through training for health workers and Female Community Health Volunteers (FCHVs), expanding access to maternal care, nutrition, and preventive healthcare. Additionally, SAPPROS integrates Social Behavior Change (SBC) initiatives to educate communities on balanced nutrition and healthy eating habits. By supporting women farmers in supplying fresh, locally produced food for school meals, SAPPROS strengthens local economies and creates employment opportunities. These initiatives align with the SDGs on Zero Hunger and Good Health and Well-being, fostering self-reliant, nutritionally secure communities.

Crosscutting Areas



Gender Equality, Disability and Social Inclusion (GEDSI)

SAPPROS Nepal mainstreams gender equality, disability, and social inclusion (GEDSI) across all its programs, ensuring development is equitable and transformative. Collaborating with local governments and stakeholders, the organization promotes the rights and leadership of marginalized groups, including women, persons with disabilities, and gender minorities.

SAPPROS has developed a comprehensive GEDSI policy to institutionalize inclusion in governance and economic opportunities. It integrates gender-responsive planning and intersectional approaches to dismantle structural barriers, promote inclusive education, and ensure equal access to resources. By conducting capacity-building programs, awareness campaigns, and policy advocacy, the organization empowers marginalized groups to engage in governance and claim their rights. Aligning with Nepal's gender and inclusion policies and global commitments such as SDG 5 (Gender Equality) and SDG 10 (Reduced Inequalities), SAPPROS fosters inclusive development. It works to eliminate social and economic barriers, ensuring women, persons with disabilities, and vulnerable groups become active agents of change in their communities.



Safeguarding

SAPPROS Nepal upholds the right to protection for children and vulnerable adults, implementing a strict Safeguarding Policy against abuse, exploitation, and harm. This policy enforces ethical standards among staff, partners, and community members, ensuring a zero-tolerance approach to misconduct.

The organization integrates safeguarding across all programs through awareness, training, and reporting mechanisms, fostering a protective environment. It works closely with schools and local institutions to promote child protection, prevent gender-based violence, and advocate for the rights of vulnerable groups. By aligning with global standards such as the UN Convention on the Rights of the Child (UNCRC) and national safeguarding policies, SAPPROS ensures individuals under its care receive dignity, safety, and empowerment.





Sustainability

SAPPROS Nepal embeds sustainability across its initiatives, ensuring long-term impact through community ownership and governance strengthening. By implementing structured exit strategies, phasing over, phasing down, and phasing out, SAPPROS ensures projects transit smoothly to local management, minimizing financial dependency.

The organization integrates sustainability across four pillars: human, social, economic, and environmental. Human sustainability is fostered through education, health, and skill development. Social sustainability is strengthened by inclusive governance and institutional capacity-building. Economic sustainability is promoted through diversified livelihoods and financial access, ensuring long-term stability. Environmental sustainability is embedded in climate-smart agriculture, disaster preparedness, and resource conservation. By partnering with local governments, private sector actors, and global agencies, SAPPROS ensures its projects remain impactful beyond external funding cycles, fostering resilient, self-sufficient communities.



Monitoring and Evaluation

SAPPROS Nepal has established a robust Monitoring, Evaluation, Research, and Learning (MERL) system to drive evidence-based, measurable change across its programs. By integrating real-time data tracking, participatory assessments, and both qualitative and quantitative research, the organization ensures that project outcomes are effectively monitored and adapted to evolving community needs. Beyond simple data collection, the MERL system leverages digital tools, GIS mapping, and remote sensing technologies to enhance transparency, accuracy, and accessibility, allowing stakeholders to engage in informed decision-making. A key component of this approach is fostering a culture of continuous learning, where regular impact assessments, baseline and endline studies, and real-time evaluations inform adaptive programming. By embedding learning cycles into implementation, SAPPROS ensures that successful interventions are scaled, challenges are proactively addressed, and best practices are shared across projects and partners. Additionally, by actively involving communities, government agencies, and development partners in knowledge exchange and capacity-building, the organization strengthens local ownership and sustainability. Through this dynamic MERL framework, SAPPROS remains accountable, results-oriented, and committed to achieving lasting impact in the communities it serves.



Strategic Approaches and Methodologies

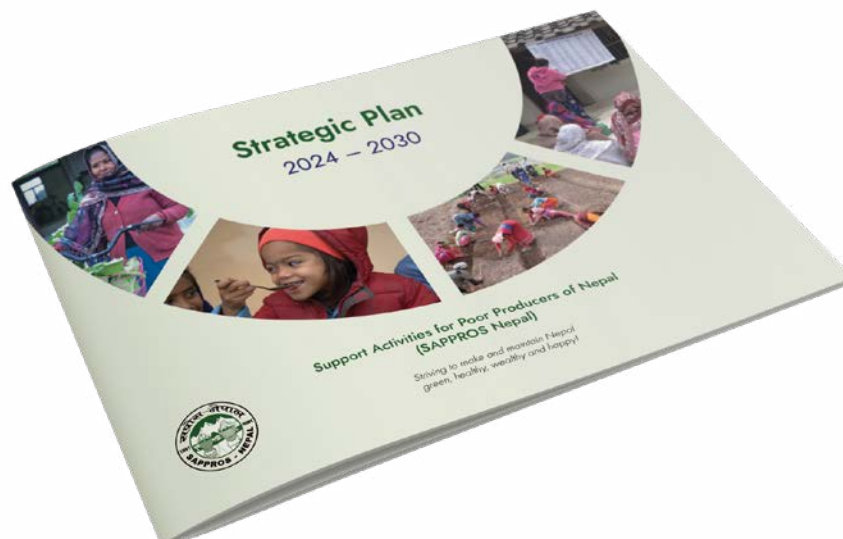
SAPPROS Nepal employs a strategic approach that ensures community-driven, inclusive, and sustainable development. The methodologies adopted are designed to address socio-economic disparities while fostering resilience and empowerment. Below is a detailed account of these approaches.

- i. **Inclusive Self-Help Groups (ISHGs)** bring community members together to pool resources, share skills, and access financial credit. These groups empower individuals to build sustainable livelihoods by fostering financial independence and entrepreneurship. Through collective decision-making, members enhance their socio-economic status while strengthening community bonds. ISHGs promote local solutions to economic challenges, ensuring long-term benefits.
- ii. **Leave No One Behind (LNOB)** principle is at the core of SAPPROS Nepal's initiatives, ensuring that marginalized communities, including women, ethnic minorities, and low-income households, benefit from development efforts. This approach actively identifies barriers that hinder access to resources and opportunities and fosters equitable participation. LNOB ensures that no group is overlooked in the journey towards sustainable development.
- iii. **Community-Based Inclusive Development (CBID)** emphasizes grassroots participation, engaging local communities in planning, implementation, and monitoring. This bottom-up approach ensures that interventions are context-specific and aligned with local needs. By involving stakeholders at every stage, CBID fosters a sense of ownership and accountability. This approach enhances the sustainability of projects and strengthens local governance structures.
- iv. **Disability Inclusive Development (DID)** integrates accessibility and inclusive principles in all initiatives to ensure equal participation of persons with disabilities. SAPPROS Nepal adopts inclusive infrastructure, training programs, and communication strategies that cater to diverse needs. This approach dismantles barriers to participation and promotes a right-based perspective. DID fosters self-reliance and improves the socio-economic standing of individuals with disabilities.



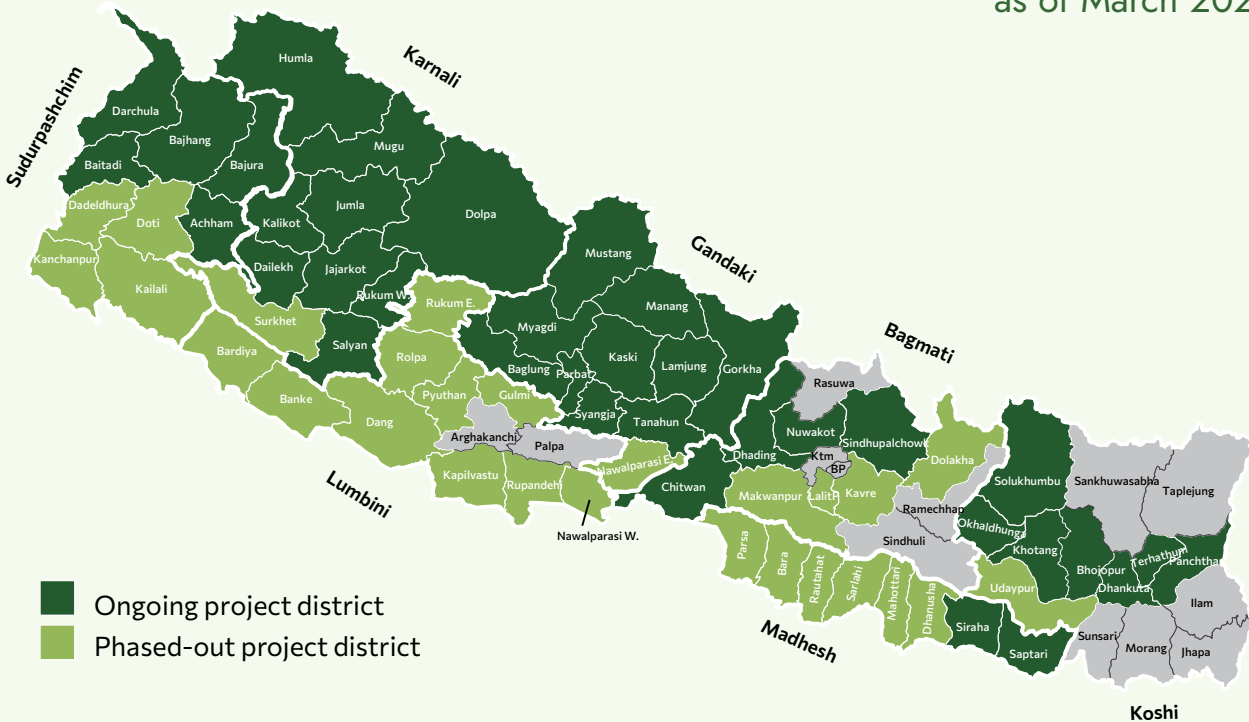
- v. **The Gender Equity, Disability, and Social Inclusion (GEDSI)** framework promotes fair and inclusive development by addressing structural inequalities. SAPPROS Nepal mainstreams GEDSI across all programs to dismantle barriers faced by women, persons with disabilities, and marginalized groups. This approach ensures equal access to opportunities and resources. By challenging discriminatory norms and fostering equitable policies, GEDSI enhances social justice and community cohesion.
- vi. **Reducing violence against girls and women** is a priority, as SAPPROS Nepal works to challenge discriminatory attitudes and harmful practices. Awareness campaigns educate communities about gender-based violence (GBV) and the importance of respectful relationships. The organization implements capacity-building programs and advocacy initiatives to foster behavioral change. By strengthening local support systems, this approach ensures safer environments for women and girls.
- vii. **Do No Harm principle** guides interventions to prevent unintended negative consequences. Before project implementation, risk assessments are conducted to mitigate potential harm. Ethical considerations ensure that programs do not reinforce social disparities or disrupt community stability. Continuous monitoring helps refine approaches and address emerging risks. This approach prioritizes safety, dignity, and long-term positive impact.
- viii. **Participatory planning, implementation, and monitoring** enhance community engagement and project effectiveness. Stakeholders, including local authorities, community members, and civil society organizations, are involved in decision-making. Transparency and accountability are upheld through regular consultations and feedback mechanisms. This approach strengthens local capacity and promotes inclusive governance. By fostering collaboration, it ensures that development initiatives are sustainable and community driven.
- ix. **Strengthening the resilience of communities to natural disasters** is a key focus of SAPPROS Nepal. The organization integrates disaster risk reduction (DRR) strategies into its development programs. Capacity-building initiatives equip communities with skills to anticipate, respond to, and recover from disasters. Resilient infrastructure, early warning systems, and emergency preparedness plan minimize disaster-related vulnerabilities. By embedding resilience into development efforts, this approach safeguards community progress and well-being.

Please refer to the following link to access the detailed **Strategic Plan 2024-2030** (<https://tinyurl.com/2xak3pp8>) of SAPPROS Nepal.



Geographical Coverage

Areas covered by SAPPROS Nepal projects, as of March 2025



Key Programs and Projects

Summary of ongoing and immediate past projects

S. N.	Name of project	Funding agency	Location	Project duration	
				From	To
1	USAID Local Works: Safal	USAID	Lamjung and Lalitpur Districts	Dec.-24	Dec.-27
2	WSS and SP Scheme Construction, Management and Institutional Support to WUSC in Jumla, Kalikot and Dailekh Districts	USAID/DAI	Jumla, Kalikot and Dailekh Districts	Nov.-24	Sep.-25
3	Home Grown School Meal (HGSM) Program	Mercy Corps	Darchula District	Jun-22	Dec-
4	Financial Autonomy and the inclusion of Personas with Disabilities through Agriculture (FAIDA)	CBM Global	Chitwan District	Jul-24	Jul-27
5	SAMANATA – Dignity through Livelihood Improvement for person with Disability in Nepal	CBM Global	Sindhupalchok	Sept 2023	Aug 2025
6	JP - RWEE	IFAD	Siraha and Saptari Districts	Sep-23	Sep-25
7	JP - RWEE	WFP	Siraha and Saptari Districts	Jun-19	Dec-24
8	SAFE	WFP	West Rukum District	May-24	Jan-25
9	Ratmate Livelihood Restoration Program (LRP)	MCA Nepal	Nuwakot District	Mar-22	Mar-24
10	BHAKARI	Mercy Crops	Jumla,Mugu, Kalikot, Achham, Dailekh, Surkhet	Oct-20	Jun-23
11	PAHAL	Mercy Crops	Darchula, Dailekh, Surkhet, Jajarkot, Salyan, Rukum, Rolpa and Pyuthan Districts	Sep-16	Nov-19
12	Leveraging Women's Leadership and Empowerment in Value Chain for Resilient Livelihoods (Women In Value Chain)	WFP	Kailali District	Mar-20	Mar-23

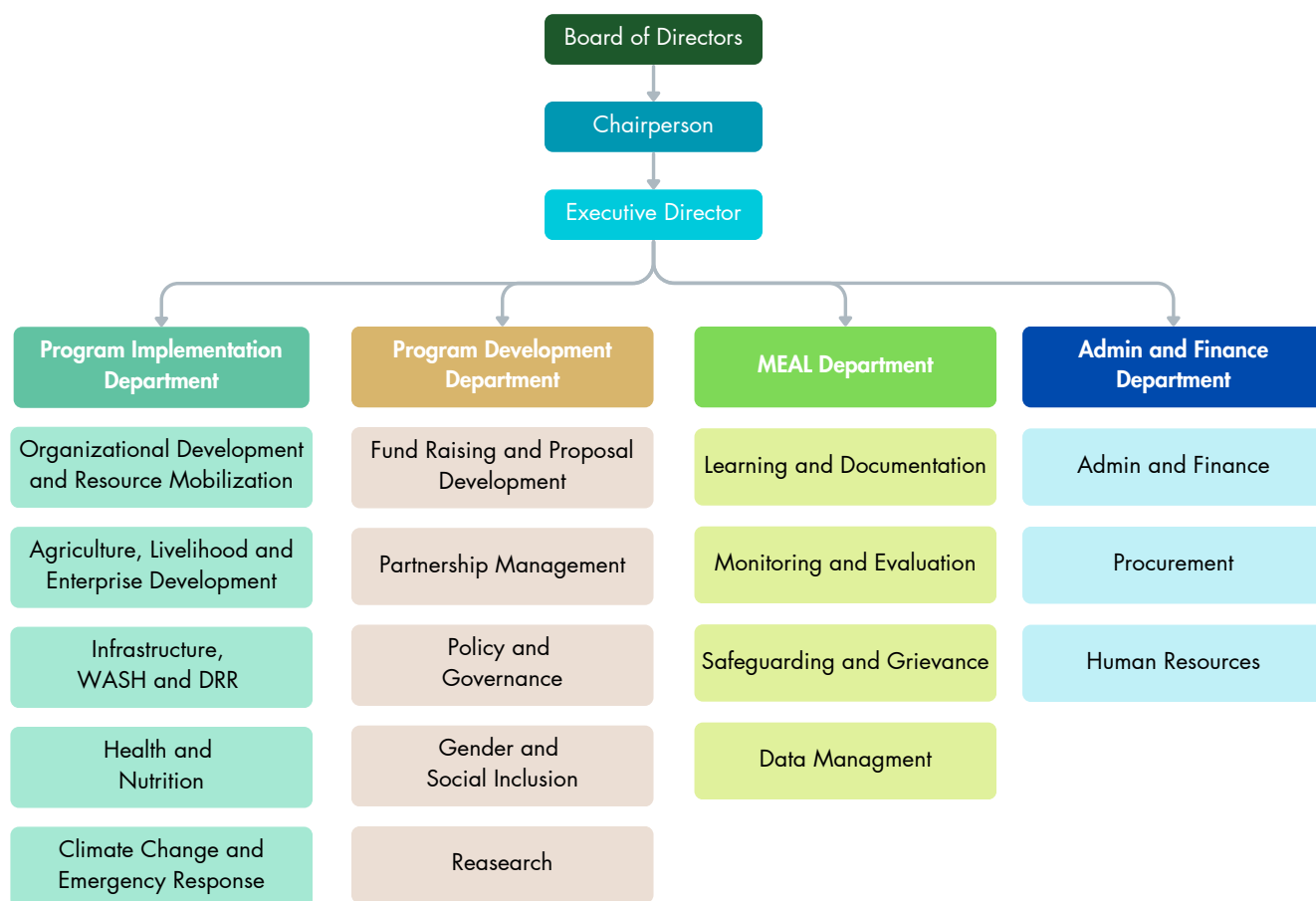
S. N.	Name of project	Funding agency	Location	Project duration	
				From	To
13	ReCoVER	CRS	Kaski, Lamjung, Tanahu, Makawanpur and Chitwan Districts	Jul-21	Sep-23
14	MCHN	WFP	Humal, Mugu, Jumla, Dolpa and Bajura Districts	May-14	Dec-24
15	PURNIMA	FCDO/Mott MacDonald Pvt. Ltd.	Nuwakot District	Dec-18	Oct-21
16	BRACED	USAID/IDE	Dadeldhura, Kanchanpur, Kailali, Bardiya and Surkhet Districts	Jan-15	Mar-19
17	PURNIMA	Mott MacDonald Pvt.Ltd.	Nuwakot, Dhading and Gorkha Districts	Jan-20	Jun-22
18	Emergency Operation:Early Recovery Project (Phase III) Gorkha Project	WFP	Rautahat, Sarlahi, Siraha and Saptari Districts	Sep-15	Mar-16

For more details about our past project, please refer to the provided link **SAPPROS Nepal Past Project** (<https://tinyurl.com/mr2wytpw>).



Institutional Strength and Governance

Organizational Structure



Board Members and Leadership

S. N.	Name of executive committee members	Position	Gender	Caste/ Ethnicity	Academic Qualification	Years of experience
1	Dr. Arun Raj Kunwar	Chairperson	Male	Chhetri	M.D. in Adult & General Psychiatry	+10 years
2	Shyam Khadka	Vice-Chairperson	Male	Chhetri	M.Com, MBA, BL	30+ years
3	Shyam Bahadur K.C.	General Secretary	Male	Chhetri	MA Geology	10+ years
4	Pleasure Bhandari	Treasurer	Female	Brahmin	Bachelor's Degree	5+ years
5	Shreekrishna Upadhyay	Member	Male	Brahmin	MA (Economics), M.Com	30+ years
6	Dr. Jay Singh Sah	Member	Male	Madhesi	PhD, MSc. Ag.	30+ years
7	Kanchhimaya Tamang	Member	Female	Janjati	Literate	20+ years

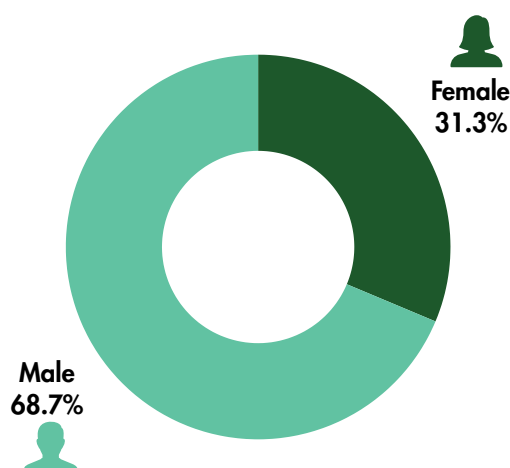
Departmental Team

S. N.	Name of staff	Position	Gender	Academic Qualification	Years of experience
1	Sanju Bagale	Executive Director	Female	MSC in Environment Management/ Master in Rural Development	15+ Yrs.
2	Rajman Shrestha	Program Development Coordinator	Male	MBA (Entrepreneurship)/Diploma in Civil Engineering	25+ Yrs.
3	Bijay Karki	Program Implementation Coordinator	Male	MBA (Marketing)	25+ Yrs.
4	Bidur Khadka	Finance Manager	Male	MBS (Financial Management)/MA (Sociology)	30 + Yrs.
5	Kshitij Wagle	Program Development & Monitoring, Evaluation and Learning Manager	Male	Master's Degree in Crisis Management/ Bachelor in Environment Sciences	12+ Yrs.
6	Krishna Raj Aryal	Food Security and Livelihood Expert	Male	Master's Degree in Agriculture	20+ Yrs.
7	Manju Adhikari	GEDSI Expert	Female	Master's Degree in Sociology/LLB	20+ Yrs.
8	Durga Khadka	Health and Nutrition Officer	Female	Master's Degree in Sociology/PCL in General Medicine	15+ Yrs.
9	Anuja Gelal	HR Officer	Female	BBA/Master's Degree Running	3+ Yrs.
10	Roshan Maharjan	Procurement Officer	Male	MBS	8+ Yrs.

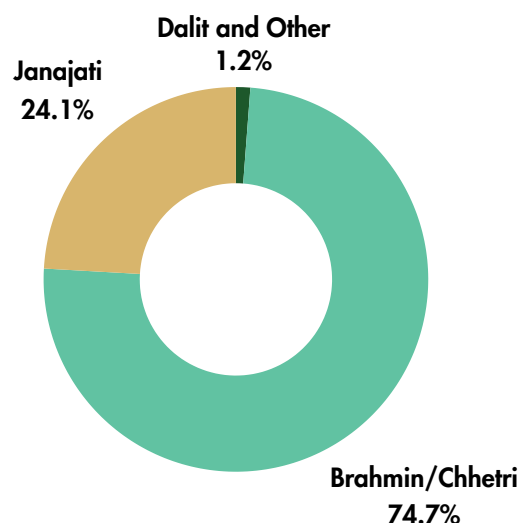
Note: The list of employee aforementioned showcases multiple departments and their led portfolio. Apart from this, SAPPROS Nepal currently retain 57 male and 26 female qualified and experienced staffs represented ethnically by 62 Brahmins/Chhetri, 20 Janajati and 1 Dalit, working in different projects implemented across the country.

Human Resource Capacity

By sex



By ethnicity



Financial Management and Accountability

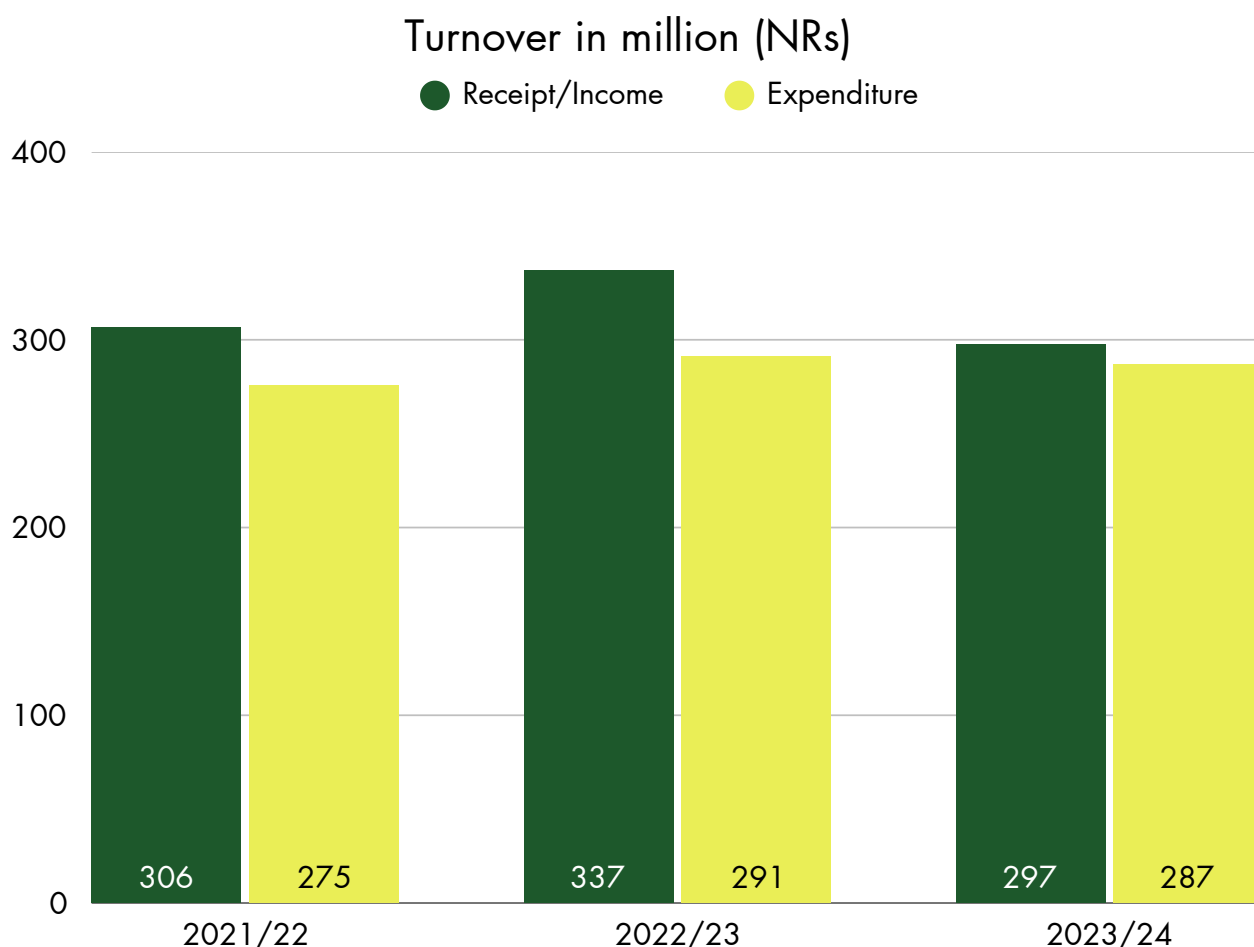
Financial Practices and Policies

SAPPROS Nepal follows a double-entry bookkeeping system based on the accrual method of accounting, adhering to Generally Accepted Accounting Principles (GAAP). The organization maintains separate financial records for each project, with dedicated bank accounts for individual projects. To enhance transparency and accountability in fund management, financial records are managed through the Financial and Management Accounting System (FAMAS).

The organization's financial, human resource, and procurement practices are governed by established policies and guidelines, such as the Administration and Financial Guidelines, Human Resource Guidelines, and Procurement Guidelines, ensuring transparency, accountability, and internal control.

Additionally, SAPPROS Nepal has implemented several policies and guidelines to uphold fundamental ethical and operational standards in all its interventions including Safeguarding, GEDSI, Whistle Blowing, Staff Retention, Conflict of Interest, Anti-Corruption policies and staff code of conduct.

Turnover/Project Fund Mobilization



Partnership and Collaborations

SAPPROS Nepal has committed its services for poor and vulnerable people of Nepal relentlessly since last 34 years with a glorious history within itself, collaborating with 34+ funding agencies including Government of Nepal, Bilateral agencies, Multilateral agencies, National Organizations, and different NGOs and INGOs

Innovations and Technologies for Smart Agriculture and Water Security Promoted by SAPPROS Nepal

SAPPROS Nepal has been continuously supporting Nepalese farmers for last 34 years in modern and resilient farming practices with different tools and techniques including Plastic Mulching and Multi-Use Water Supply System (MUS) to Lined Canal Irrigation in alignment with its envisioned mission of Healthy Food Movement and Make Nepal Green.

For details on Innovation and Technologies used by SAPPROS Nepal for Smart Agriculture and Water Security, please follow the link given: **Innovation and Technologies Promoted by SAPPROS Nepal** (<https://tinyurl.com/3b6dp265>)

Monitoring, Evaluation and Learning (MEL)

About MEL

SAPPROS Nepal adopts a structured Monitoring, Evaluation, and Learning (MEL) framework to ensure program effectiveness and sustainability. This approach integrates robust tools and methodologies that facilitate data collection, analysis, and adaptive learning. The framework is designed to provide real-time insights, drive evidence-based decision-making, and promote transparency across all development initiatives.

Tools and Techniques Applied by SAPPROS Nepal

- i. **Digital Data Collection** – Utilizing mobile surveys, GPS mapping, and real-time dashboards (e.g., KoboToolbox, ODK, and CommCare) for efficient and accurate data gathering.
- ii. **Participatory Monitoring** – Engaging community members through focus group discussions (FGDs), participatory rural appraisals (PRA), and key informant interviews (KIIs) to ensure local insights shape project outcomes.
- iii. **Geospatial Analysis** – Leveraging GIS mapping tools (such as ArcGIS and QGIS) to assess geographic disparities and target interventions effectively.
- iv. **Outcome Harvesting** – Employing qualitative techniques to evaluate unexpected changes by analyzing beneficiary narratives and success stories.
- v. **Theory of Change (ToC) & Logical Framework Approach (LFA)** – Structuring program designs with measurable indicators to ensure systematic evaluation.

- vi. **Data Visualization** — Using platforms like Power BI, Tableau, and Excel dashboards to present findings in an accessible and actionable format.
- vii. **Third-Party Evaluations** — Engaging external experts and research institutions to conduct independent assessments, ensuring objectivity and credibility.
- viii. **Real-Time Feedback Mechanisms** — Establishing community feedback loops through hotlines, suggestion boxes, and digital surveys to address emerging needs.
- ix. **Impact Evaluation Techniques** — Applying ODAC criterias, Difference-in-Differences (DiD), and Quasi-Experimental Designs to measure program effectiveness.
- x. **Learning Workshops & Knowledge Sharing** — Organizing after-action reviews, reflection sessions, and training to institutionalize best practices and lessons learned.

By integrating these cutting-edge tools with thematic indicators, SAPPROS Nepal not only refines its interventions but also drives transformative social change, ensuring long-term resilience and sustainable development for the communities it serves.

Our Campaigns

Make Nepal Green

The “Make Nepal Green” campaign, led by SAPPROS Nepal, promotes environmental sustainability, economic resilience, and food security by advocating for organic agriculture, renewable energy, ICT and Eco-tourism, reforestation. The initiative aims to reduce raw food imports, enhance food security, and combat deforestation through sustainable land management. A key focus is transitioning from non-renewable to renewable energy sources, particularly solar power, to achieve energy independence and lower costs for households, industries, and transportation. Additionally, the campaign fosters ecotourism, positioning Nepal as a leader in sustainable tourism while boosting local economies and raising environmental awareness. Since 2016, SAPPROS Nepal has convened international conferences, collaborated with global experts, and conducted research to advance organic farming and renewable energy solutions. The “Make Nepal Green Fund” plays a pivotal role in expanding these efforts, offering financial support for grassroots initiatives in renewable energy, organic farming, and ecotourism. Through policy advocacy, capacity-building, and innovative solutions, SAPPROS Nepal aligns this movement with global sustainability goals, ensuring a greener, more resilient Nepal for future generations.



Safe and Healthy Food Movement (SHFM)

SAPPROS Nepal's Safe and Healthy Food Movement (SHFM) addresses the growing risks of poor nutrition, non-communicable diseases, and environmental degradation by advocating for safer, healthier food systems. Aligned with global efforts, SHFM promotes government intervention to create healthier food environments through policies, education, and improved access to nutritious food. A key focus is reducing pesticide use and mitigating soil degradation, as chemical contamination poses serious health risks. To counter this, SAPPROS supports domestic producers in adopting organic and regenerative farming practices that ensure chemical-free food and sustainable land use. The movement also emphasizes rigorous monitoring of food products to uphold health standards. By 2030, SHFM envisions a nationwide shift toward a resilient food system that enhances public health, strengthens food security, and promotes economic and environmental sustainability. Recognizing the interconnection between nutrition, livelihoods, and climate resilience, the campaign calls for collective action among policymakers, farmers, and communities. SHFM is more than a campaign, it is a strategic roadmap for ensuring a healthier, more sustainable future for all Nepalese citizens.





Success Stories

Women at Jhulania Shines in Collective Vegetable Farming

Anita Devi Chaudhary from Chamaripur, Ward no. 8 of Gauriganga Municipality in Kailali District of Sudharpaschim Province, Nepal, proudly shared that she can now buy the things she needs without having to ask her husband for money. She, her friend Ranu Choudhary, and many other women in the village have become financially independent thanks to the 'Women in Value Chain (WiVC) project' implemented by SAPPROS Nepal with the financial support of the World Food Program (WFP).

The project helped these women to form a group called 'Jhulania Women Farmers' Group' with 22 members. Later, they are trained in vegetable cultivation, provided with necessary agricultural inputs, and education on nutrition. As a result, the group has grown seasonal and off-season vegetables, which they now sell as a cash crop, earning them a good income. As a result, they no longer have to rely on their husbands for small expenses.

The project has also provided irrigation tools like water pumps and deep-boring equipment, making it easier for them to irrigate their farmlands. Additionally, the project has guided them on how to sell their products in the market, including local schools. The group sell fresh vegetables, milk, pulses and fruits to the nearby Durga Primary School, Mahalaxmi Primary School and Beetal Primary School at a cheaper rate than the market price.

The Jhulania farmers group has been cultivating their vegetables organically, saving them the cost of chemical fertilizers and pesticides and improving their health. The women farmers sell the surplus production at nearby markets, with the group harvesting 9,100 kilograms of vegetables in the last season alone.

Anita Devi Chaudhary, in particular, has expanded her vegetable farming from two to five acres and has even started growing mushrooms organically. The women in the group are proud of their accomplishments and share a slogan jointly “Harek Baar, Khana Char (Every day, four types of meals).”.

This is just one representative story. Numerous transformative stories have emerged from the interventions and initiatives led by SAPPROS Nepal. To explore more stories, please visit: <https://sappros.org.np/>



**Support Activities for Poor Producers of Nepal
(SAPPROS Nepal)**

39-Kha, Surya Marga, Babarmahal, Kathmandu, Nepal

E: info@sappros.org.np; sapprosnepal@hotmail.com

T: +977 1 5342318, 5332129 | W: www.sappros.org.np

Striving to make and maintain Nepal
green, healthy, wealthy, and happy!